



**INTELLIGENT
TODAY
SMARTER
TOMORROW**

WIDEX EVOKE™

HEARING HAS EVOLVED



YOU CAN SHAPE THE WORLD'S FIRST **TRULY SMART** HEARING AID

Now the quality of your hearing experience can evolve in real time and in real life.

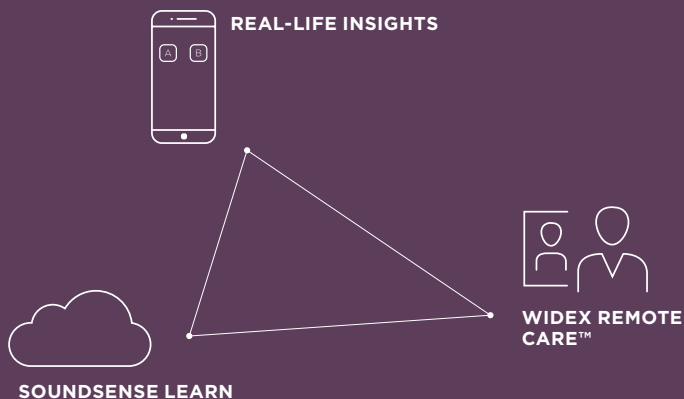
Your WIDEX EVOKE™ hearing aid has interactive options that help you intuitively shape your listening experience anytime, anywhere. And how you shape it can be shared directly with your hearing care professional, so you get even more tailored hearing care. Plus, you can even access hearing expertise remotely with WIDEX REMOTE CARE™.

And if you don't want to do a thing?

WIDEX EVOKE™ automatically adjusts to your real-life needs and your real-life environment. So you don't miss a single moment.



THREE INTELLIGENT WAYS TO OPTIMISE HEARING



SOUNDSENSE LEARN

Artificial Intelligence with the WIDEX EVOKE™ app effortlessly guides you to better, more personalised hearing in real-life situations.

REAL-LIFE INSIGHTS

Now you can share the settings and programs you've saved directly with your hearing care professional through a secure data connection. That way they get to know your hearing even better and become better at meeting your needs.

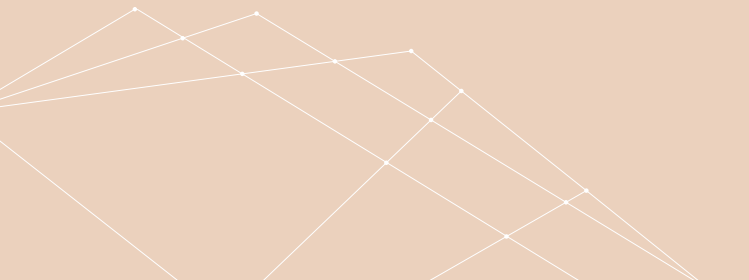
WIDEX REMOTE CARE™

With WIDEX REMOTE CARE™ you get access to hearing expertise via a remote connection – from anywhere you'd like.



YOU HELP IT GET EVEN **SMARTER**

Every time you interact with WIDEX EVOKE™, it improves. For example, you might personalise your listening experience at your favourite restaurant. WIDEX EVOKE™ will learn from that. And we will use this anonymous data to keep updating the SoundSense Technology in WIDEX EVOKE™, so that it gets even smarter as time passes. In other words, the intelligent WIDEX EVOKE™ you buy today becomes even smarter tomorrow.





WIDEX EVOKE™ comes in a wide range of models and colours to suit your needs, preferences and lifestyle.

KEEPS UP WITH **YOUR** LIFE

WIDEX EVOKE™ knows the difference between classical music and pop music. How a meeting sounds different from a party. And it keeps up with you everywhere – mapping your environment and adjusting accordingly. Since the sounds you're exposed to are always changing, WIDEX EVOKE™ automatically reacts to the environment around you – smoothly and in real time.



EASY. INTUITIVE. TAILORED

Want an even more personalised sound? Teach WIDEX EVOKE™ how you prefer to hear with a few taps on the WIDEX EVOKE™ app. The SoundSense Learn function gives you two sound profiles to choose from. Simply listen to them and select the sound you prefer – as many times as you want. It's never been easier to improve your hearing in everyday, real-life situations.





HEAR **EVERY** MOMENT

When it's noisy, you need your hearing aid to filter out anything that can distract from hearing speech. But in quiet situations you want to hear all the subtle details. WIDEX EVOKE™ has a built-in controller that sets the optimal sound for different sound environments. Now you can experience what's happening in real life and never miss out.



YOU MIGHT **FORGET** YOU'RE WEARING IT

WIDEX EVOKE™ remembers all the volume changes you make and intelligently applies them to similar situations - even if you're in a totally new environment. With its built-in SoundSense Adapt technology, it's so intelligent you might eventually forget you're wearing it!



LIFELIKE SOUND, NATURALLY

Every sound has its own “recipe”. And the more lifelike the sound, the easier it is to hear. That’s why we’ve given WIDEX EVOKE™ the most natural sound you can get from a hearing aid.



ONE PROGRAM TO FIT **ALL**

When you’d rather hand over control, try the Universal program and let it automatically adjust to the sounds around you using its built-in Fluid Sound Analyzer and Controller. So if you don’t want to interact with your hearing aid, you don’t have to.

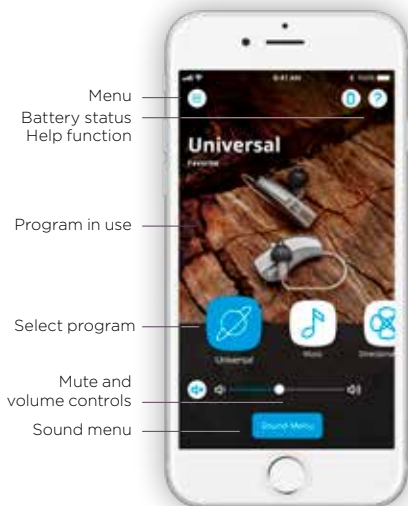
WIDEX EVOKE™ APP

GUIDES YOU TO **PERSONALISED** HEARING

Refine your hearing in real life by listening to two sound profiles with the app and choosing which you prefer: A or B. The more times you do it, the more WIDEX EVOKE™ learns about how you want to hear at that moment. You can then save your preferences as a program and use it the next time you are in the same environment.

You can also:

- Mute or adjust hearing aid volume and use the equaliser to adjust sounds
- Create personal programs with your own names, photos and sound adjustments
- Add locations to programs and locate your hearing aids if you lose them





GETTING STARTED WITH THE WIDEX EVOKE™ APP

Your WIDEX EVOKE™ hearing aids combined with the WIDEX EVOKE™ app ensure superior sound in all situations – since you can shape exactly the sound you need in the moment you need it.

By pairing your smartphone with your hearing aid, you get intuitive control options. If you have an iPhone, you can also enjoy direct streaming of phone calls and music.

WIDEX EVOKE™ APP COMPATIBILITY

The WIDEX EVOKE™ app is available through the App Store and Google Play. To see the latest overview of which smartphones are compatible with the WIDEX EVOKE™ app, please visit:
global.widex.com/compatibility

PAIRING YOUR **HEARING AIDS** TO YOUR **SMARTPHONE**

APPLE iOS

- Turn on Bluetooth
- Choose Settings > General > Accessibility > MFi hearing aids
- Turn the hearing aids off and on by opening and closing the battery door. Wait until the phone has found the hearing aids. If it can't, try turning the hearing aids off and on again
- Select the hearing aids and press "Pair"
- The hearing aids are now paired with the phone, and you can use the WIDEX EVOKE™ app

ANDROID

- Go to Settings and turn Bluetooth on
- Turn the hearing aids off and on by opening and closing the battery door. Wait until the phone has found the hearing aids (visible under Available units). If it can't, try again by turning the hearing aids off and on
- Select the WIDEX EVOKE™ hearing aids
- Your hearing aids are now paired with the phone, and you can use the WIDEX EVOKE™ app

UPDATES

Widex regularly updates the app to ensure that you always have access to the best version of your hearing aid(s). If your phone asks you to update the app, it's important to press "Start update". The update may take several minutes.

TONELINK APP

GIVES **EASY CONTROL** OF KEY FUNCTIONS

Turn your smartphone into a remote control to easily change programs, mute, adjust volume and change directional focus. TONELINK's simple interface is right at your fingertips, and adjustments become a naturally integrated part of daily life. There's no need to carry separate assistive listening devices or to touch the hearing aids.

The TONELINK app is available for all WIDEX EVOKE™ models and can be downloaded on the Apple Store and Google Play. Visit our TONELINK app support site to see which smartphones are compatible:
global.widex.com/tonelink



GETTING STARTED WITH THE TONELINK APP

With the TONELINK app you get easy smartphone control of your hearing aids.



PAIRING YOUR HEARING AIDS WITH TONELINK

- In the TONELINK app, choose “Get started”
- Read the instruction and the disclaimer and press “I accept”
- If you received a hearing aid user guide with a QR code from your hearing care professional, follow the prompt to allow the app to access the camera and scan the QR code. If you do not have a QR code, press “Skip”
- Open and close the battery doors of your hearing aids, put them on and press “Next” in the app
- Press “Pair” in the app to pair your hearing aids to the TONELINK app
- If you hear a sound from the hearing aids, press “Yes” to finish the pairing
- The hearing aids are now paired with the app

STAY CONNECTED

DEX ACCESSORIES – CONNECT, CONTROL AND COMMUNICATE

DEX accessories help you effortlessly connect to audio equipment, remote controls, televisions and mobile or landline phones. Ask your hearing care professional for more details.



COM-DEX
For hands-free
streaming



COM-DEX
REMOTE MIC
For improved
audibility in noise



RC-DEX
Your remote
control



CALL-DEX
For discreet streaming
from mobile phones



FM-DEX
For flexible
streaming



UNI-DEX
For plug-and-play
mobile phone use



TV-DEX
For enjoying TV

STYLISH AND STABLE TV SOUND STREAMING WITH WIDEX TV PLAY™

WIDEX EVOKE™ works in perfect unison with WIDEX TV PLAY™, the most versatile, stable and straightforward sound-streaming solution yet.

- Maximum streaming stability lets you move freely around the room without missing a second of the outstanding stereo TV sound that TV PLAY™ delivers
- An elegant and versatile TV sound-streaming solution, the award-winning TV PLAY™ design integrates nicely with modern décor and can be placed in front of the TV or attached to the back
- Intuitive to install and seamless to pair, you can easily customise your listening experience with the app and enjoy your favourite TV moments

You can control TV PLAY™ with the button on your hearing aid, your Widex Remote Control or the WIDEX EVOKE™ app.



WIDEX EVOKE™ MODELS AND STYLES

WIDEX EVOKE™ is available in nine models that sit behind the ear and four models that sit in the ear. Your hearing care professional can help you choose the ideal model for your specific hearing loss and lifestyle.

MODELS THAT SIT **BEHIND THE EAR**



MODELS THAT SIT **IN THE EAR**



CHOOSE YOUR **COLOURS**

Choose between thirteen different colours for models that sit behind the ear and three standard colours for models that sit in the ear.



WHICH WIDEX EVOKE

WIDEX EVOKE™

440

ULTIMATE PERFORMANCE

If you demand the most sophisticated technology without compromise:

- Most automation of any Widex hearing aid
- More natural, true-to-life sound than ever before
- Best ability to understand speech in any environment
- Automatically adapts to your environment in eleven different listening situations

WIDEX EVOKE™

330

EXCEPTIONAL PERFORMANCE

If you demand high standards of performance in everything you do:

- Automatically adapts to your environment in seven different listening situations
- Excellent ability to understand speech even in challenging situations
- Great for active lifestyles

WIDEX EVOKE™

220

HIGH-QUALITY PERFORMANCE

If you demand good value:

- Automatically adapts to your environment in four different listening situations
- Remembers changes you make and applies them to similar situations – even in new environments

WIDEX EVOKE™

110

AFFORDABLE PERFORMANCE

If you look for affordable technological solutions:

- Automatically adapts to your environment in three different listening situations
- Helps you hear soft sounds and speech clearly

E™ IS RIGHT FOR YOU?

- Remembers changes you make and applies them to similar situations – even in new environments
- Industry-leading wind noise reduction system ideal for outdoor use
- Immediate comfort and clarity of speech in quiet and noisy situations
- Effortlessly guides you to a better hearing experience while remembering your preferences and continuously improving

-
- Remembers changes you make and applies them to similar situations – even in new environments
 - Effortlessly guides you to a better hearing experience while remembering your preferences and continuously improving

-
- Optional Comfort program quickly reduces sounds and adds comfort in quiet and loud environments
 - Effortlessly guides you to a better hearing experience while remembering your preferences and continuously improving

LEARN MORE AT [GLOBAL.WIDEX.COM](https://global.widex.com)



MIX
Paper from
responsible sources
FSC® C068122



2019-07. 9 502 5256 001 #01

Widex and WIDEX EVOKE are trademarks of Widex A/S.



Widex A/S, Nymoellevej 6, DK-3540 Lyngø

Apple and the Apple logo are trademarks of Apple Inc., registered in the U.S. and other countries. App Store is a service mark of Apple Inc.

Android is a trademark of Google Inc. Google Play and the Google Play logo are trademarks of Google Inc.

GLOBAL.**WIDEX**.COM